



THE AMBERSHORE

FLOOR PLANS AND PAYMENT PLAN GUIDE



Version 01.0924

THE AMBERSHORE

Experience the perfect fusion of modern sophistication and convenience at The Ambershore, where refined accommodations meet exceptional amenities

THE AMBERSHORE AT A GLANCE

- The Ambershore offers meticulously designed 2-bedroom apartments with a dedicated home office or BQ, catering to young professionals, business travelers, leisure seekers and corporate patrons seeking a refined lifestyle.
- Strategically situated in the heart of Victoria Island, Lagos, offering unparalleled access to key business hubs and leisure destinations.
- High-quality facilities and purposeful amenities designed to enhance work-life balance, including a rooftop restaurant, meeting rooms, gym, spa, swimming pool, and co-working space.

Generously proportioned apartments finished with high-quality specifications, providing a tranquil retreat that seamlessly blends modern elegance with cozy warmth.

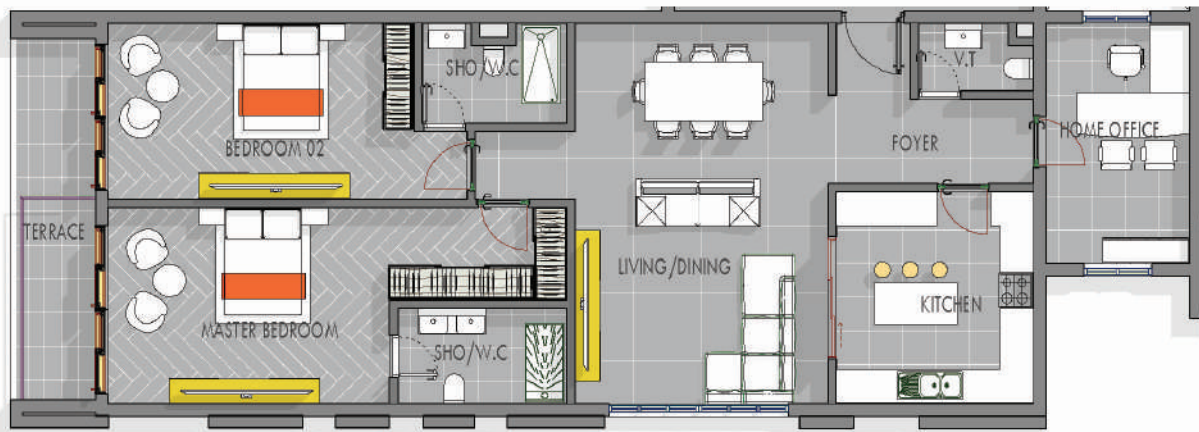


FLOOR PLANS





2-BEDROOM WITH HOME OFFICE

TYPE A



FLOOR AREAS

	Living Area/Dining	48sq.m
	Kitchen	18sq.m
	Bedroom 1 (en-suite)	40sq.m
	Bedroom 2 (en-suite)	31sq.m
	Home Office	13sq.m
	Balcony	10sq.m
	TOTAL AREA	160sq.m

LOCATION



2-BEDROOM WITH HOME OFFICE

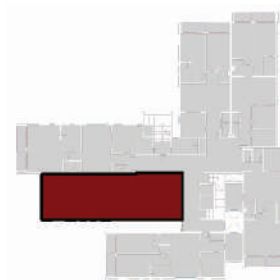
TYPE B



FLOOR AREAS

	Living Area/Dining	48sq.m
	Kitchen	17sq.m
	Bedroom 1 (en-suite)	39sq.m
	Bedroom 2 (en-suite)	30sq.m
	Home Office	14sq.m
	Balcony	10sq.m
	TOTAL AREA	158sq.m

LOCATION



2-BEDROOM WITH BQ

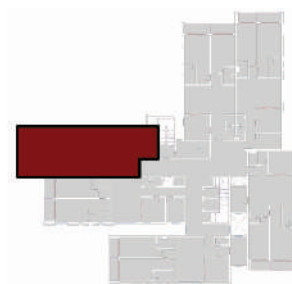
TYPE C



FLOOR AREAS

LOCATION

	Living Area/Dining	45sq.m
	Kitchen	18sq.m
	Bedroom 1 (en-suite)	40sq.m
	Bedroom 2 (en-suite)	30sq.m
	BQ	8sq.m
	Balcony	10sq.m
	TOTAL AREA	151sq.m



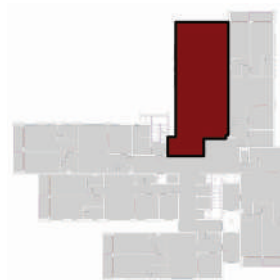
2-BEDROOM WITH BQ - TYPE D



FLOOR AREAS

	Living Area/Dining	47sq.m
	Kitchen	18sq.m
	Bedroom 1 (en-suite)	39sq.m
	Bedroom 2 (en-suite)	30sq.m
	BQ	10sq.m
	Balcony	10sq.m
	TOTAL AREA	154sq.m

LOCATION






2-BEDROOM WITH HOME OFFICE

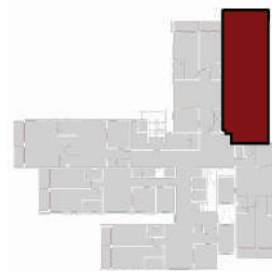
TYPE E



FLOOR AREAS

LOCATION

	Living Area/Dining	47sq.m
	Kitchen	18sq.m
	Bedroom 1 (en-suite)	39sq.m
	Bedroom 2 (en-suite)	30sq.m
	Home Office	13sq.m
	Balcony	10sq.m
	TOTAL AREA	157sq.m



**2-BEDROOM WITH
HOME OFFICE - TYPE F**



FLOOR AREAS

	Living Area/Dining	47sq.m
	Kitchen	19sq.m
	Bedroom 1 (en-suite)	41sq.m
	Bedroom 2 (en-suite)	30sq.m
	Home Office	15sq.m
	Balcony	10sq.m
	TOTAL AREA	162sq.m

LOCATION



PAYMENT PLANS AND OPTIONS



Take advantage of our flexible payment plan for The Ambershore development, allowing you to spread out your payments over the project duration. Alternatively, opt for our cash advance payment option to benefit from a discounted rate. This tailored approach ensures a seamless and financially convenient experience for our valued clients

INSTALLMENT PAYMENT OPTION

Payment Timeline	Percentage Payment	Due date (From signing)
First Installment	40%	Upon signing & exchange of Contract
2nd Installment	20%	4 months
3rd Installment	12.5%	7 months
4th Installment	5%	10 months
5th Installment	5%	13 months
6th Installment	5%	16 months
7th Installment	5%	20 Months
8th Installment	5%	24 months
Final Installment	2.5%	On Completion

CASH ADVANCE PAYMENT OPTION

Advance Payment	Discount Offer (%)
80%	2.5%
90%	5%
100%	10%





CONTACT INFO:

Tel: +234 1 454 4733 || **Email:** info@stableselters.com

Website: www.theambershore.com
www.stableselters.com



DISCLAIMER: This document is for informational purposes only and does not constitute an offer to sell or a solicitation of an offer to buy any property or interest in the development. All information, including but not limited to, prices, specifications, and availability, is subject to change without notice. The developer reserves the right to modify or cancel the development, or any part thereof, at any time. This document does not constitute a warranty or representation by the developer or its agents. All renderings, illustrations, and photographs are artist's impressions and may not accurately represent the final product. Therefore, these particulars are prepared for guidance only. The developer is not responsible for any errors or omissions in this document. This document is not intended to be a comprehensive or definitive statement of the development and is subject to the terms and conditions of the sale and purchase agreement.

